



**YOUR CHOICE**  
KITCHEN SELECTIONS

CRAFTED BY  
OUR FAMILY,  
LOVED BY  
YOURS SINCE  
1969

6



## STANDARD CHOICES

A fantastic range of units and worktops for you to choose from at no additional cost

14



## ELEMENTS CHOICES

Add a few finishing touches to personalise your space and showcase your personality

22

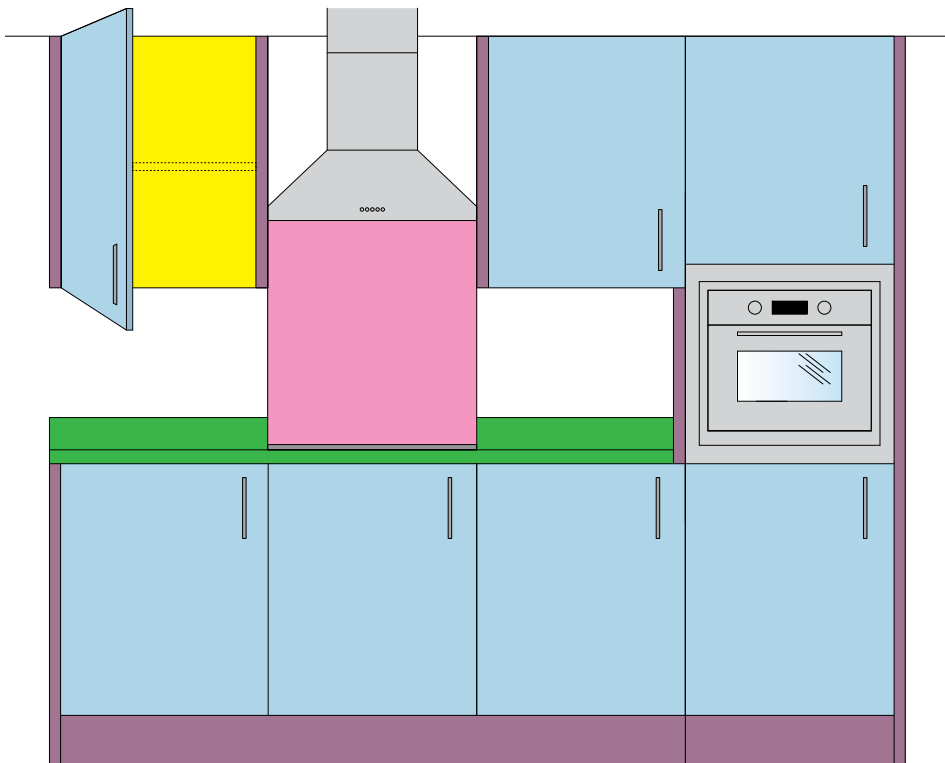
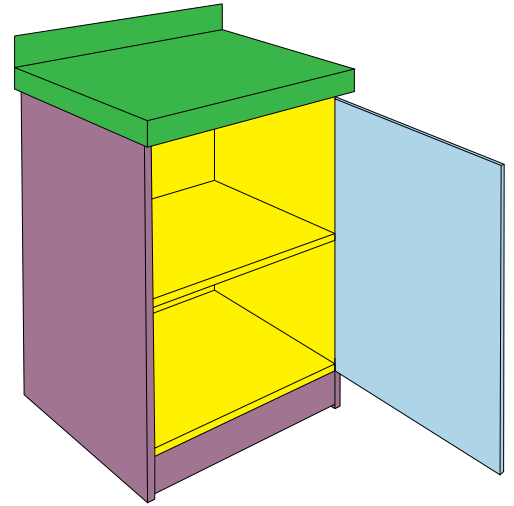


## EXCLUSIVE CHOICES

Go all out and treat yourself to luxury and style in abundance with our exclusive range

# KNOW YOUR KITCHEN

These diagrams depict the typical areas of the kitchen, these can then be cross-referenced with the relevant options shown within this brochure to help when making your selections.



- Unit Door
- Carcass
- End Panel & Plinth
- Splashback
- Worktop & Upstand

# MAKE A NOTE OF IT

Item_	Colour / Style_
Unit Door	
Carcass	
End Panel & Plinth	
Splashback	
Worktop & Upstand	

Storage Solutions_	
--------------------	--

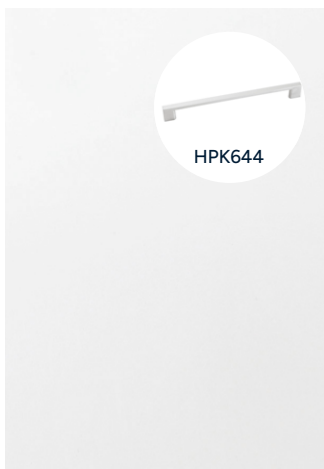
*Additional Information:*

## QUALITY AS STANDARD

As part of our standard specification on this development, you are able to choose from the following options at no additional cost.



# STANDARD KITCHEN UNIT CHOICES



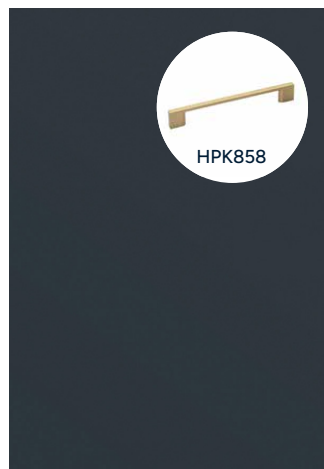
HPK644

- Woodbury White Gloss
- Matt White



HPK644

- Woodbury Gloss Platinum
- Grey Linen



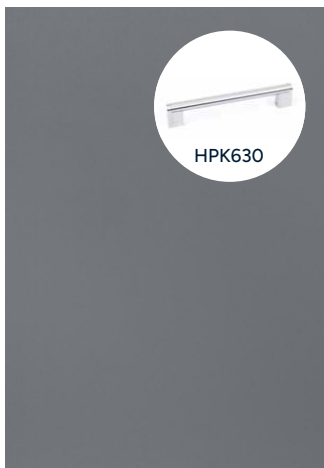
HPK858

- Urban Indigo
- Riviera



HPK630

- Urban Pebble
- Matt White



HPK630

- Urban Cobble Grey
- Grey Linen



HPK858

- Urban Fern Green
- Riviera



HPK642

- Melrose Mineral
- Grey Linen





↳ Melrose Mineral

# STANDARD KITCHEN WORKTOPS & UPSTANDS



Farmhouse Oak\_ 40mm\_ PF40/PV40



Iceberg Marble\_ 40mm\_ PR40



Carbon Steel\_ 40mm\_ PF40/PV40



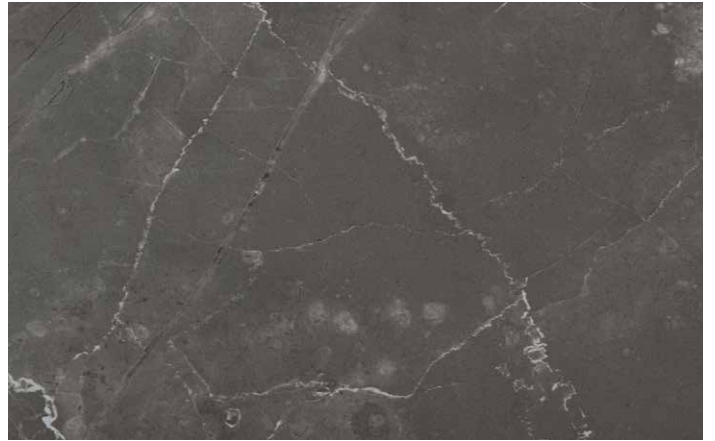
Silver Oak\_ 40mm\_ PR40



Empire Marble\_ 40mm\_ PF40/PV40



Arctic Marble\_ 40mm\_ PR40



Venice Marble\_ 40mm\_ PR40



Alaska\_ 40mm\_ PF40/PV40



Marble Sirocco\_ 40mm\_ PF40/PV40

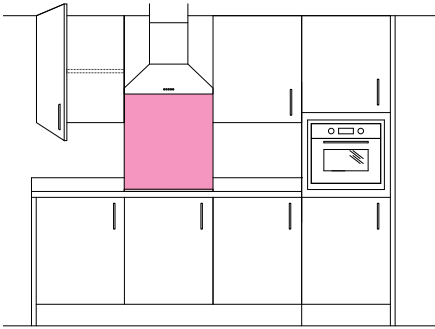


Volcanic Ash\_ 40mm\_ PR40



# SPLASHBACK

A Stainless Steel Symphony splashback is supplied as standard behind the hob only.



# STORAGE

To fully appreciate the quality of the kitchens we provide, you'll need to look below the surface. Here, you'll find clever doors and drawers, giving you the very best for your new kitchen.

That's why we include an **internal drawer system** (2 drawers & cutlery tray) to help you stay organised.



## OUR ELEMENTS UPGRADE OPTIONS

Should you choose your perfect kitchen from our standard range, have a look at the finishing touches that can personalise your space and really showcase your personality.

The following options have been created to help complement your kitchen by upgrading certain aspects or adding that little something special.

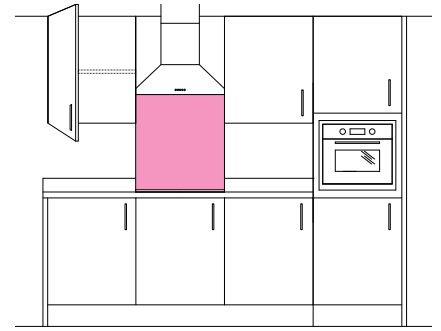


↳ Princeton Providence Blue

# UPGRADED SPLASHBACKS

A wonderful range of 6mm glass splashback options are available should you wish to upgrade from our standard Stainless Steel.

KA101 £120



Mineral



Bride



Chalk White



Ebony



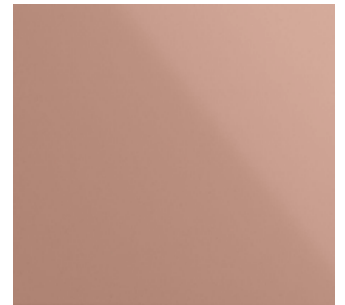
Pewter



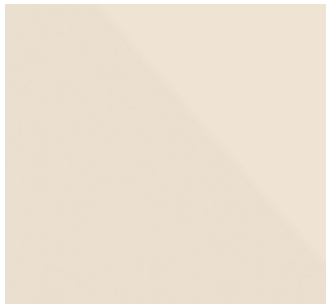
Anthracite



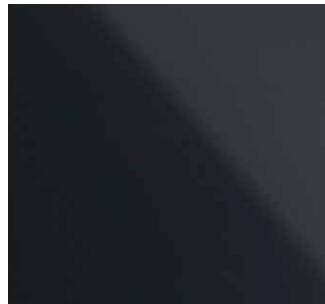
Dakar Yellow



Dusty Pink



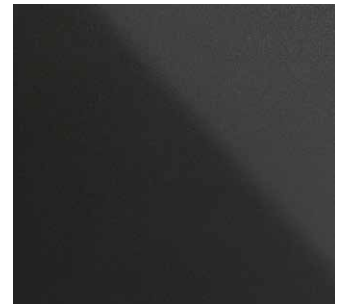
Cashmere



Indigo



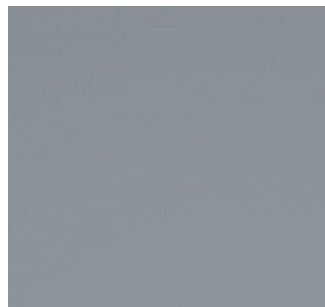
Merlot



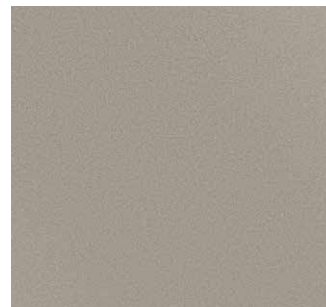
Metallic Charcoal



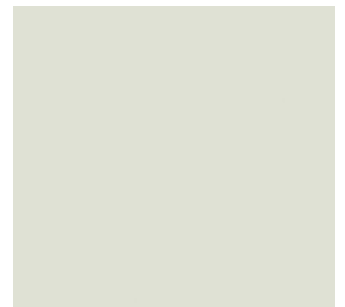
White Sparkle



Storm Blue

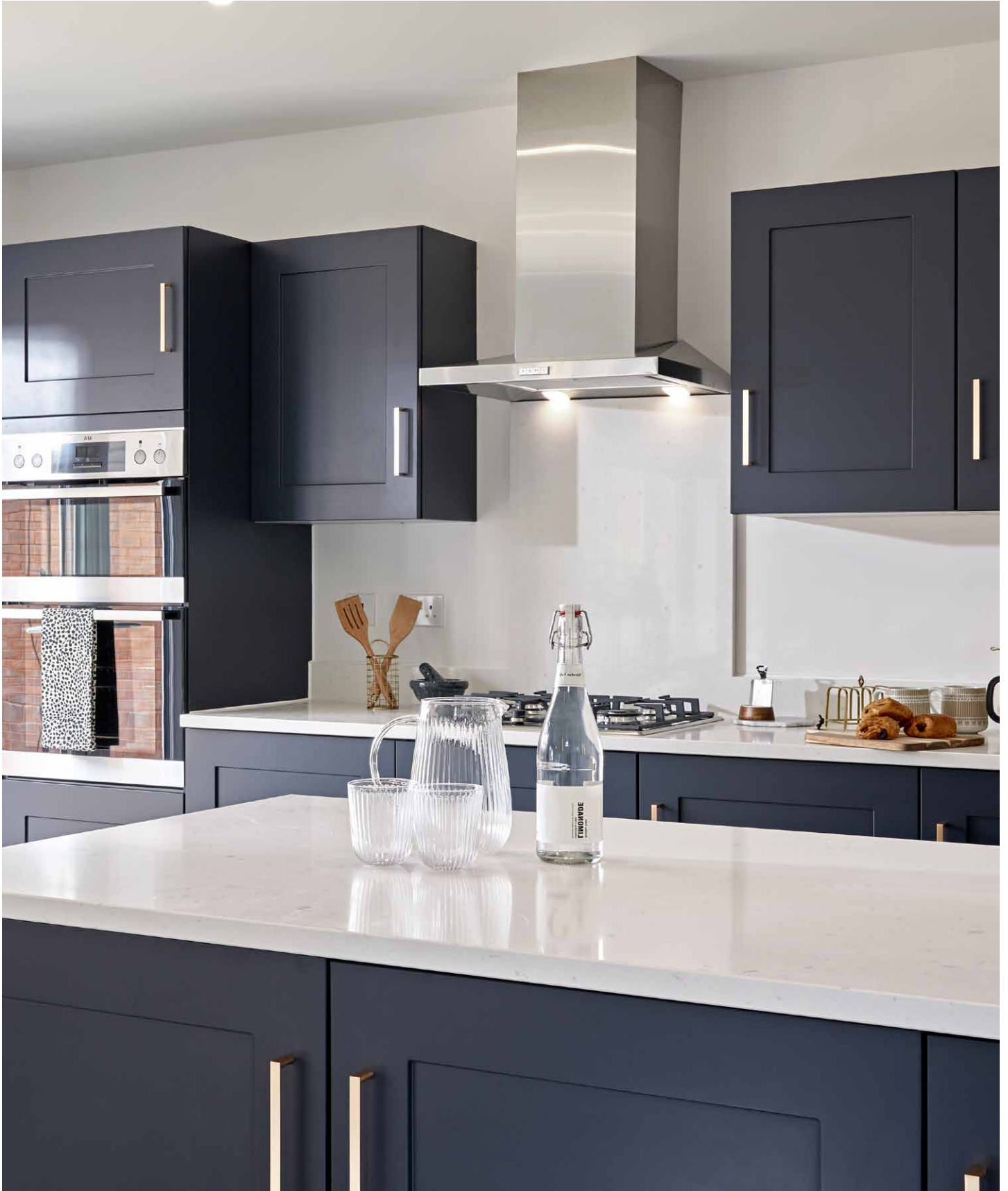


Silver



Platinum





↳ Chalk White Splashback with Langdale Indigo kitchen

## WORKTOP UPGRADES

Caesarstone Quartz engineered worktops with upstand.

This includes:

- Choice of 12 colour choices
- Carron Phoenix 'Ibis' stainless steel undermounted sink with standard kitchen mixer tap (to Kitchen only).
- Drainer grooves.
- Utility worktops and upstands (if applicable) are also upgraded.
- Choice of Glass or Quartz splashback to rear of hob.



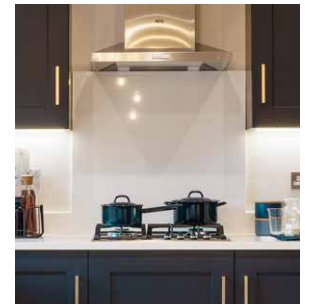
### KA102 £POA



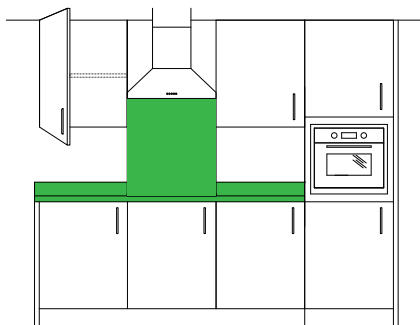
Drainer Grooves  
(Included as standard)



Utility Area  
(Included as standard)



Splashback to rear of hob with option for Glass or Quartz - selection available.  
(Included as standard)



# EXTRAS

You could also customise your worktops with these extras, available for an additional cost.



Window Cill



Waterfall Ends (*mitred joints*)



Service cupboard worktop (*if applicable*) upgraded to Quartz



White Shimmer (*Band 1*)



Ocean Foam (*Band 1*)



Clam Shell (*Band 2*)



Misty Carrera (*Band 2*)



Organic White (*Band 2*)



Shitake (*Band 3*)



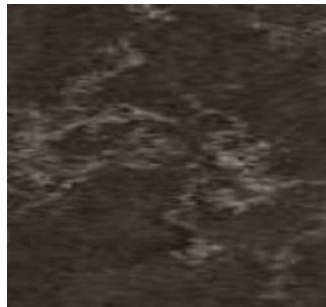
Fresh Concrete (*Band 3*)



White Attica (*Band 3*)



Vanilla Noir (*Band 3*)



Woodlands (*Band 4*)



Bianco Drift (*Band 4*)



Moorland Fog (*Band 4*)

## STORAGE SOLUTIONS

Le Mans corner storage unit to kitchen.

Take advantage of this innovative storage solution that helps make the most of every inch of space available in your kitchen, whilst keeping everything accessible and within easy reach.

**KA201 £470**



3 Drawer internal storage unit to kitchen

**KA202 £320**



*Please note: The location of these options are pre-determined and available only where space permits. Please speak to our Sales Team for further information.*

## ADDITIONAL ACCESSORIES

Symphony Boiler housing unit to match existing kitchen units.

**KA001 £290**

Additional Symphony Base Unit replacing appliance space.

**KA002 £240**



## END PANELS & PLINTHS

Upgrade end panels and plinths to match kitchen unit door style (replacing carcass matched).

1 & 2 Bed properties

**KC201 £650**

3 Bed properties

**KC202 £750**

4 Bed properties

**KC203 £880**

5 Bed properties

**KC204 £990**



*Please note: These options are available only where space permits. Please speak to our Sales Team for further information.*

## OUR EXCLUSIVE UPGRADE OPTIONS

Fancy going all out? We are here to help, our exclusive upgrade options offer luxury and style in abundance, from Shaker to more traditional finishes, the choice is yours and you're sure to love it.

### Create your dream kitchen in 4 easy steps:

- 1** Choose your door unit style and handle from our exclusive selection
- 2** All matching end panels and plinths are included
- 3** Choose your worktop and upstand  
*(see pages 10-11)*
- 4** Choose your favourite splashback  
*(see page 16)*



↳ Harvard Charcoal

# PRINCETON DOORS

Upgrade kitchen unit style (19mm thick doors) to choice of Princeton shown below:

1 & 2 Bed properties  
**KC241 £1,520**

3 Bed properties  
**KC242 £1,620**

4 Bed properties  
**KC243 £1,750**

5 Bed properties  
**KC244 £1,850**



● Princeton Providence Blue  
● Grey Linen



● Princeton Chalk White  
● Matt White

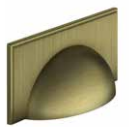


● Princeton Pearl Grey  
● Grey Linen

## PRINCETON HANDLE SELECTION



HPK873K



HPK872K



HPK875



HPK874

# HARVARD DOORS

Upgrade kitchen unit style (19mm thick doors) to choice of Harvard shown below:

1 & 2 Bed properties  
**KC266 £1,520**

3 Bed properties  
**KC267 £1,620**

4 Bed properties  
**KC268 £1,750**

5 Bed properties  
**KC269 £1,850**



● Harvard Charcoal  
● Grey Linen



● Harvard Hunter Green  
● Riviera

## HARVARD HANDLE SELECTION



HPK644



HPK858



HPK950





↳ Princeton Pearl Grey

# LANGDALE DOORS

Upgrade kitchen unit style (22mm thick doors) to choice of Langdale shown below:

1 & 2 Bed properties  
**KC261 £1,520**

3 Bed properties  
**KC262 £1,620**

4 Bed properties  
**KC263 £1,750**

5 Bed properties  
**KC264 £1,850**



- Langdale Fern Green
- Riviera



- Langdale Indigo
- Riviera



- Langdale Harbour Grey
- Grey Linen

## LANGDALE HANDLE SELECTION



HPK935

HPK936

HPK937

# BROOKLYN DOOR

Upgrade kitchen unit style (19mm thick doors) to choice of Brooklyn shown below:

1 & 2 Bed properties  
**KC271 £1,520**

3 Bed properties  
**KC272 £1,620**

4 Bed properties  
**KC273 £1,750**

5 Bed properties  
**KC274 £1,850**



- Brooklyn Matt White
- White



↳ Langdale Fern Green